



MUSEUM

COLLECTION

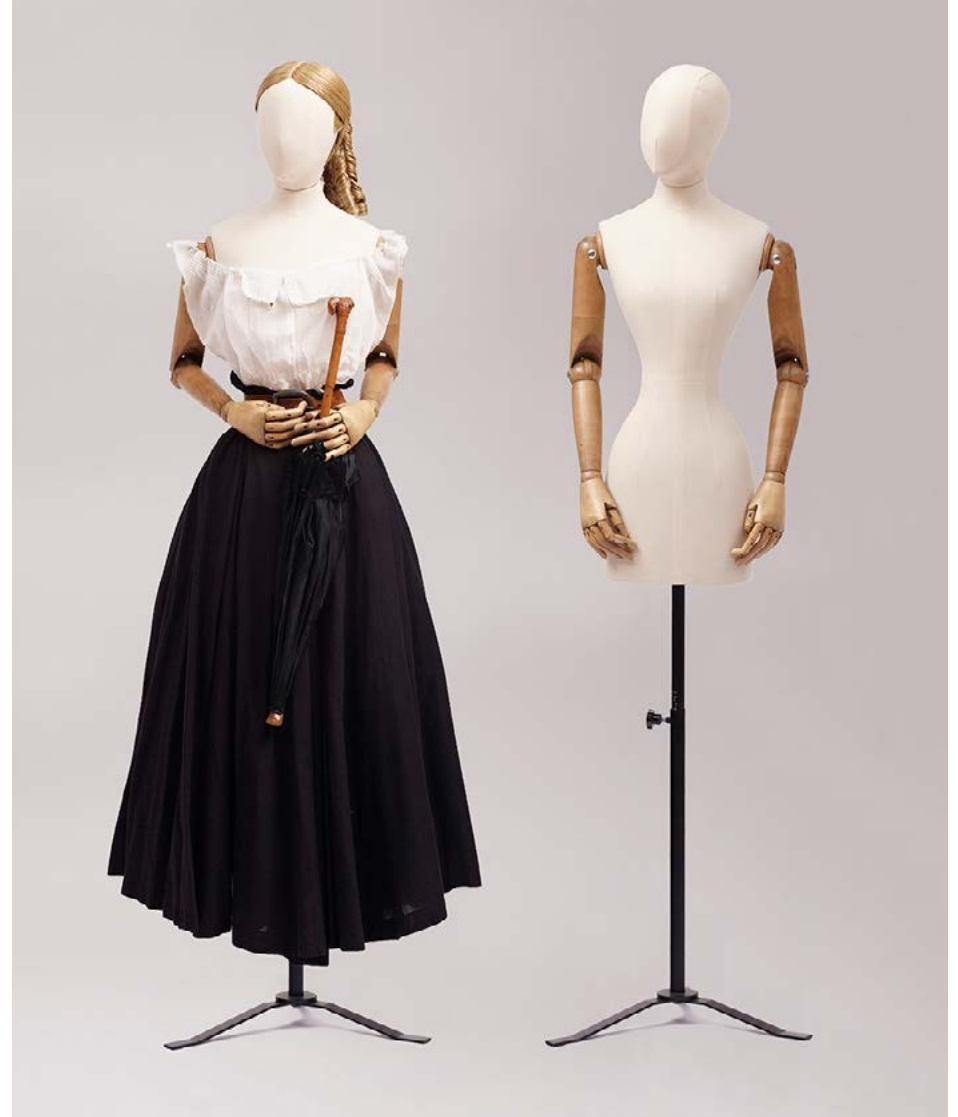
Proportion London's Museum Collection incorporates a range of sizes and shapes from Victorian and Edwardian figures through to 1950s Hollywood and modern British classics.

Initially collaborating with Gems Studio to produce costume figures, Proportion has spent over 20 years developing and perfecting an innovative range in collaboration with industry-respected specialists.

Our handmade bust forms are globally recognised, trusted and used by curators and conservators at the most prestigious museums and exhibitions around the globe.

Discover the collection...

PET01 | PETITE



PETITE

Proportion London worked with Victoria and Albert Museum's in-house fashion specialist, Lara Flecker, and the talented textile and costume conservator, Deborah Phipps, to develop a petite bust form specifically designed to display **period garments**.

The 'Petite' bust form has been acknowledged by industry specialists as a **versatile** shape that is suitable for an array of costume presentation ranging from a 17th-century farthingale to a 1920s flapper dress.

bust	68
waist	44
hip	75
shoulder width	31
back nape to waist	35.5
shoulder length	11

RET01 | MODERNE



1930

bust	84
waist	62
hip	83
shoulder width	35
nape to waist	31
back nape to waist	32.5
shoulder length	9



RET02 | EDWARDIAN



1910

bust	79
waist	47
hip	84
shoulder width	27
nape to waist	40
back nape to waist	35.5
shoulder length	10



RET03 | VICTORIAN



1880

bust	83
waist	56
hip	103
shoulder width	28.5
nape to waist	33.5
back nape to waist	40
shoulder length	10



RET04 | BELLE EPOQUE



1888

bust	85
waist	54
hip	N/A
shoulder width	33
nape to waist	30.5
back nape to waist	33
shoulder length	13.5



9010 | BRITISH



Our **best-selling** bust form has evenly distributed proportions that suit most garments, making it our most popular choice amongst **curators and conservators**.

size	bust	waist	hip
36	79	54.5	83.5
38	82	57	86
40	84.5	60	89
42	88	64	94
44	92	66.5	98
46	96	70	101.5
48	99	74	104
50	104	77.5	111

9015 | CONTINENTAL



Our **leaner, slanderer** version of our 'British' bust form has the perfect proportions to display **structured clothing**.

size	bust	waist	hip
36	79.5	52	82
38	82.5	55	84
40	85	57	88
42	88	60	90
44	92	64.5	97
46	96	68	99
48	99	74	104
50	104	77	109
52	108	81.5	113

9020 | FRENCH



Generous on the waist and hip, this **shapely** bust form also features a natural bustline which works well with **jackets** and **suiting**.

size	bust	waist	hip
36	80	59	87
38	82.5	62	90
40	86.5	66	93
42	89	69	96
44	92	71	99
46	95	74	102

9025 | HOURGLASS



Our **curviest shape** with a narrow waist and generous hip has the perfect proportions to display **classic 1950s Hollywood garments**.

size	bust	waist	hip
34	81.5	54	89
36	84	56	92
38	87.5	62	95
40	90	65	98
42	93	69	101
44	96	74	104
46	99	77	107
48	100	81	109

9030 | FLARED SKIRT



This **shapely** bust form has a large waist-hip ratio to accommodate skirts, dresses, eveningwear and other **flared garments**.

size	bust	waist	hip
12	88	64	91
14	91	68	96
16	94	72	99
18	99.5	77	104

9038 | LONGLINE



With a **long length** body, this bust form is specifically designed to display **full length items** such as ball gowns and evening wear.

size	bust	waist	hip
10	86	63.5	89
12	89	68.5	93.5
16	96	75	99.5

9040 | FITTED



A well-proportioned shape incorporating in-built **padded shoulder caps** is specifically designed for **jackets and tailoring**.

size	bust	waist	hip
8	82	60	87.5
10	85.5	65	92
12	88.5	67	94
14	90	70	98.5
16	94.5	72.5	102
18	102	78	108

9045 | CORSET



This **curvaceous** bust form, featuring a shaped bottom and crotch area, is designed specifically to suit **lingerie** and **corsetry** items.

size	bust	waist	hip
1	90.5	66	95
2	84	62.5	93

9050 | BRITISH



Our classic bust form shape is the perfect partner for the 'Petite' female form. With an aristocratic build and full chest, the figure is ideal for **formal tailoring** and **mature** clothing.

size	chest	waist	hip
34	87	76	89
36	91.5	80.5	94
38	97	86.5	99
40	102	91.5	102
42	106.5	96.5	106.5
44	111.5	100	112

9060 | CONTINENTAL



This **fashion-forward** shape has a lean, svelte body with a flatter chest that's perfect for displaying **modern styles**.

size	chest	waist	hip
42	84	75	90
44	86	77.5	94
46	91	82	98
48	94	85.5	102
50	100	90.5	106
52	103.5	94.5	109.5
54	107	98.5	113.5
56	111.5	102.5	118
58	114.5	107.5	122

6000 | BODY CONSCIOUS



A **muscular physique**, featuring a heavily built chest, makes this bust form an excellent choice for **form-fitting** items.

size	chest	waist	hip
1	95	84	94
2	101.5	86.5	98

BUS02 | HERITAGE



With **wooden articulated arms** and a shorter body, this bust form is specifically designed to display **shirts** and **jackets**.

size	chest	waist	hip
1	100	82	89

BUS03 | PREPPY



This **preppy-inspired** mannequin sports a broader chest and larger build to accentuate **form-fitting** clothing, such as classic t-shirts.

size	chest	waist	hip
1	120	91	109

BUS04 | CLASSIC



A **block-shaped** bust form with a low waist-hip ratio and sloped shoulders make this classic shape the perfect choice for **tailoring**.

size	chest	waist	hip
1	103	85	100

BUS07 | SOPHISTICATED



A **slender** and sophisticated bust form with a small chest make this shape ideal for **high fashion** and slim-fitting garments.

size	chest	waist	hip
1	98	78	95

BUS05 | CASUAL



This **unique** shape featuring slim hips and a small bottom was specifically created to display **drop-crotch denim** and baggy-fit trousers.

size	chest	waist	hip
1	101	73.5	90.5

9028 | GIRL



Our **classic girl-shape** bust form is available in four sizes between 2-14 years and can be used for all types of garments.

size	age	bust	waist	hip
24	2	58	55	67
28	6	67	60	75
34	12	80	65.5	87
36	14	83	68	89

9018 | SLIM GIRL



A **slimmer, shapelier** take on our classic girl has a larger waist-hip ratio to create a more feminine look that is ideal for **dresses**.

size	age	bust	waist	hip
102	2	55	51	61.5
108	4	57	52	64
114	6	59	53	66
120	7	62	54	68
126	8	63.5	55	69.5
132	9	66	57	72
138	10	70	59	76
144	11	73	60	80
150	12	78	61	83.5

9080 | BOY



Our **classic boy-shape** bust form is available in five sizes between 6-15 years and can be used for all types of garments.

size	age	chest	waist	hip
26	6	67	58.5	70
27	8	69	61	73
28	10	71	62.5	77
30	13	77	69	83.5
32	15	83	74	91



Our child forms are available in a variety of sizes between 2-15 years and can be used for all types of garments. There are two shape choices for our girl figures.

CAST IRON TRIPOD BASE



WORKROOM TRIPOD BASE



WOODEN TRIPOD BASE



WORKROOM & TERMINAL



PADDED ARMS



GLOSSARY OF TERMS

FULL BODY

Our classic cut is popular with tailors and workrooms. The long length body provides full hip coverage, making this cut extremely versatile for dresses, coats and tailoring. NOTE: this cut is not recommended for use with trousers.

CUTAWAY BODY

Primarily used for tailoring, this adapted version of the 'Full Body' has a cutaway feature that's specifically for trouser display.

KNITWEAR FORM

A female shape that is cut just below the hip to retain an element of lower body shape is perfect for exemplary knitwear and jersey and shirt presentation.

BLOUSON FORM

A male shape that is specifically designed with a cut at hip height to show shirts, t-shirts, suiting and knitwear. The form can be used in conjunction with a trouser bar and excess fabric can be discreetly pinned underneath.

TAILORING MECHANISM

This traditional tailoring system features a neck cap and wooden bust runner mechanism to ensure ease of work; allowing full rotation of the form while tailoring a garment.



FULL BODY



CUTAWAY BODY



KNITWEAR FORM



BLOUSON FORM



TROUSERBAR

MUSEUM

For more information about the Museum Collection
or any of our other products or services,
contact Hannah Kralev, Museum Manager:

hannah.kralev@proportion.london

tel: +44(0)207 749 1305

mob: +44(0)7825 528 878



65 Leonard St, London, EC2A 4QS
+44(0)20 7749 1300 *info@proportion.london*
www.proportion.london