

THEORY



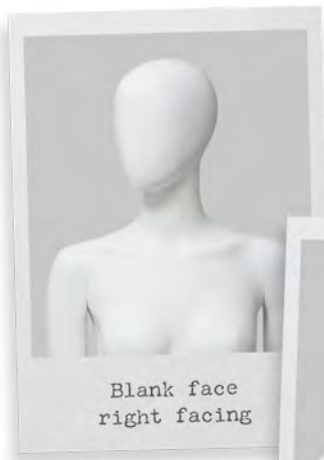
THEO1
straight arms



THEO2
hands on hip



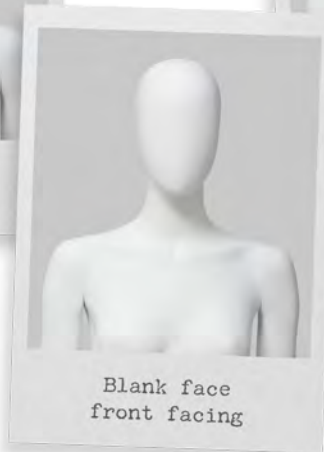
THEO3
bag hands shown with
square metal base BAN25



Blank face
right facing



Blank face
left facing



Blank face
front facing



Facial features
(able to take makeup)

Magnetic head option





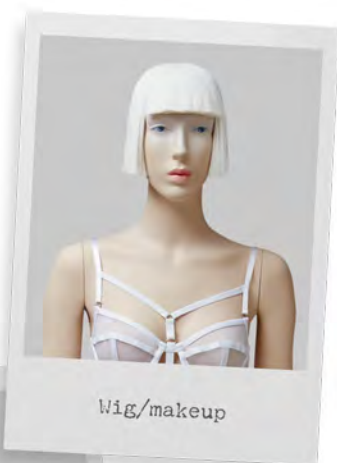
THEO4
straight arms,
wide legs



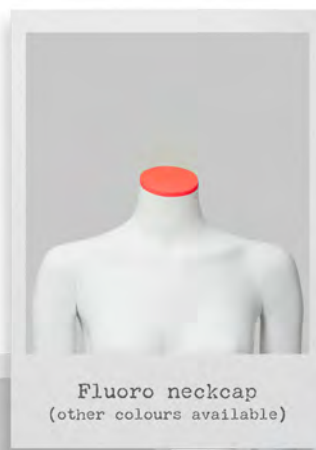
THEO5
Hands on hips,
wide legs



THEO6
Bag hands, wide legs, shown with
rectangular metal base BAM26



Wig/makeup



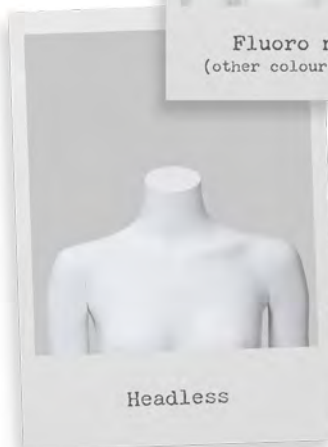
Fluoro neckcap
(other colours available)



Interchangable arms



Sculpt hair



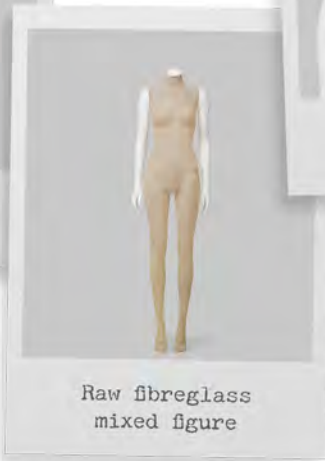
Headless



Bag hands



Raw fibreglass figure



Raw fibreglass mixed figure



Facial features
Raw fibreglass



Brushed metal square base BAM25



Brushed metal rectangular base BAM26

Various mixed material options available



Theory Measurements

Height	180 cm	71"	Hip	89 cm	35"
Height headless	166 cm	65.5"	Inside leg	84 cm	33"
Bust	80 cm	31.5"	Shoe size	37/38	4/5
Waist	61 cm	24"	Heel height	10 cm	4"

proportion > london

www.proportionlondon.com tel: +44 (0)20 7251 6943